

Mod.

GSD8-RFM

Getto singolo quadrante asciutto
Single jet-super dry



Disponibile versione
acqua calda 30-90°C
Available version
for hot water 30-90°C

ITA mod. GSD8-RFM

Getto singolo, quadrante asciutto, lettura diretta su 8 rulli numeratori. Realizzato nelle versioni per acqua fredda (30°C) e calda (90°C) nei calibri \varnothing 15 e 20 mm (1/2" e 3/4"). Quadrante orientabile a 360°. Esclusi rischi di corrosione e sedimentazione. Garanzia di lunga durata ed elevata precisione. Nuova versione con predisposizione per modulo M-BUS radio e M-BUS a filo.

ENG mod. GSD8-RFM

Single jet, dry dial, direct reading on 8 numerical rolls. Produced in the versions for cold water (30°C) and hot water (90°C) in the diameters 15 and 20 mm (1/2"- 3/4"). 360° rotating dial. Risks of corrosion and sedimentation are excluded. Long durability and elevated precision guaranteed. New version prearranged for wireless M-BUS or wired M-BUS modules.

ES mod. GSD8-RFM

Chorro único, esfera seca, lectura directa sobre 8 rodillos numerados. Construido en las versiones para agua fría (30°C) y caliente (90°C) en los calibres \varnothing 15 y 20 mm (1/2" y 3/4"). Cuadro orientable a 360°. Excluidos los riesgos de corrosión y sedimentación. Garantía de larga duración y elevada precisión. Nueva Versión preparada para modulo M-BUS radio o M-BUS por cable.

DEU mod. GSD8-RFM

Einzelwasserstrahl, trockenes Zifferblatt, Direktablesung auf 8 Zahlrollen. Produziert in den Versionen Kaltwasser (30°C) und Warmwasser (90°C) in den Durchmessern 15 und 20 mm (1/2 Zoll- 3/4 Zoll). Um 360 Grad schwenkbares Zifferblatt. Die Risiken von Rost und Ablagerungen sind ausgeschlossen. Garantiert lange Haltbarkeit und erhöhte Genauigkeit. Neue Version mit Anlage für M-bus Radio Modul oder M-bus via Kabel.

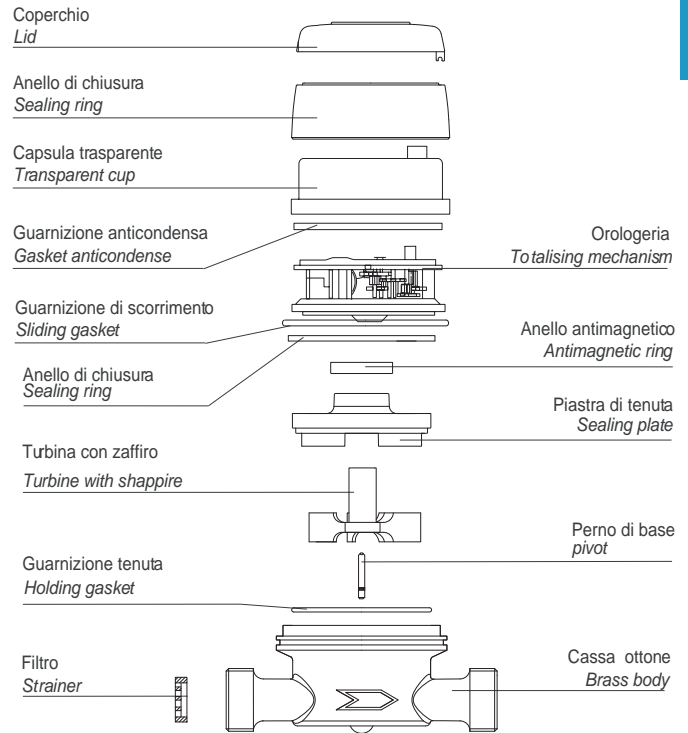
FRA mod. GSD8-RFM

Jet unique, cadran sec à lecture directe sur 8 rouleaux numériques, disponible en la version pour eau froide (30°C) ou eau chaude (90°C) et en 2 calibres 15 ou 20 mm (1/2" ou 3/4"), cadran orientable à 360°, exclus tous problèmes de corrosion et d'incrustation, fiabilité dans le temps et précision élevée. Nouvelle version préparé pour module M-BUS radio ou M-BUS câblé.

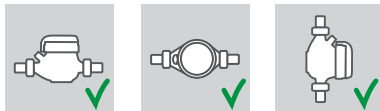
RUS мод. GSD8-RFM

Однотруйный счетчик с сухим квадрантом и прямым считыванием с 8 цифровых роликов. Выпускается в версиях для холодной (30°C) и горячей (90°C) воды диаметрами 15 и 20 мм (1/2" – 3/4"). Вращающийся на 360° циферблат. Исключены риски коррозии и образования осадка. Гарантия долговечности и высокой точности. Новая модель, предназначенная для установки проводного или радио- модулей системы M-BUS.

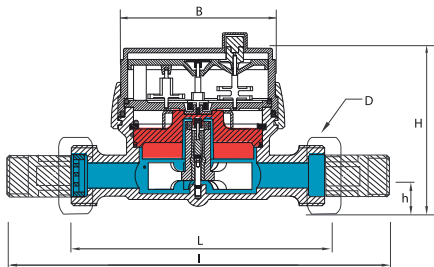
Calibro Size	DN	mm in	15 (1/2")	20 (3/4")
Portata di sovraccarico Q ₄ Overload flow rate		m ³ /h	3,12	5
	Portata permanente Q ₃ Permanent flow rate	m ³ /h	2,5	4
R = 100 H	Portata di transizione Q ₂ Transitional flow rate	l/h	40	64
	Portata minima Q ₁ Min flow rate	l/h	25	40
R = 160 H	Portata di transizione Q ₂ Transitional flow rate	l/h	25	40
	Portata minima Q ₁ Min flow rate	l/h	15,63	25
Lettura minima Min reading		l	0,05	
Lettura massima Max reading		m ³	99.999	
Pressione max ammissibile Max admissible pressure MAP		bar	16	



Posizione d'installazione
Installation position



Dimensioni e pesi - Dimensions and Weights



Calibro Size	mm in	15 (1/2")	15 (1/2")	15 (1/2")	20 (3/4")	
L	mm	80	110	115	130	
I	mm	160	190	195	228	
H	mm	73	73	73	73	
h	mm	18	18	18	18	
B	mm	85	85	85	85	
D	Filettatura Threading	mm	3/4"	3/4"	7/8"-3/4"	1"
Pesi Weight	con raccordi with unions	kg	0,60	0,65	0,70	0,85
	senza raccordi without unions	kg	0,45	0,50	0,55	0,60

Filettatura - Threading EN ISO 228-1:2000

Versione base - Basic version

- » MID R100-H/R50-V 2004/22/CE
- » Corredato da porta ottica e predisposizione per l'installazione dei moduli di comunicazione M-BUS mod. RFM-MB1 ed RFM-TX1
- » Disponibile in versione per acqua fredda 0°C-50°C e per acqua calda 30°C-90°C
- » Trasmissione magnetica
- » Lettura diretta su 8 rulli numeratori
- » Quadrante asciutto orientabile a 360°

- » MID R100-H/R50-V 2004/22/CE
- » Complete with optical port and prearrangement for the M-BUS communication modules mod. RFM-MB1 and RFM-TX1
- » Available for cold water 0°C-50°C and for hot water 30°C-90°C
- » Magnetic transmission
- » Direct reading on 8 numeric rolls
- » Dry dial
- » 360° rotating dial

Su richiesta - Upon request

- » MID R160-H/R50-V
- » Orologeria anti-condensa
- » Protezione anti frode magnetica
- » Coperchio

- » MID R160-H/R50-V
- » Anti-condensation dial
- » Anti-magnetic fraud protection
- » Lid